

Robotmaster®

CAD/CAM FOR ROBOTS

Mastercam®
Authorized Technology Partner

Robotmaster[®]

Seamless integration that delivers quick robot programming and tight conformance to design

Program Toolpaths for Manufacturing using Mastercam Mill or Router

Use a familiar process and tools from CNC machine programming

Leverage all the powerful Mastercam features including:

- fast geometry creation
- data translators for importing all CAD formats
- associative and feature based toolpath programming
- automatic toolpath generation

Use Robotmaster's extensive library to setup your robot tasks in Mastercam

Choose from FANUC, ABB, MOTOMAN, KUKA, STAUBLI and more

Enter robot operating parameters such as:

- End of arm tooling
- Setup (user frame and tool center point data)
- Motion parameters

Validate and optimize programs with Robotmaster's robot simulator

View machine operation in continuous or step mode

Simulate individual operation or complete task

Detect collisions automatically

View robot only or entire manufacturing cell

Generate more profit with your robot

with off-line programming that eliminates lost production time

Eliminate point-by-point editing

for precise conformance to design in a fully integrated CAD/CAM solution

Break the programming barrier

of singularity checking, collision detection, joint limit and reach issues in a few clicks of your mouse

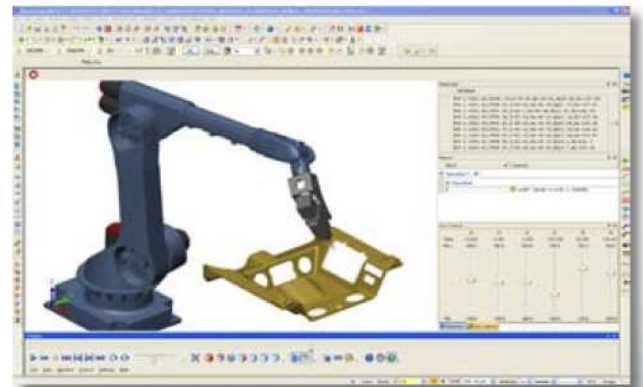
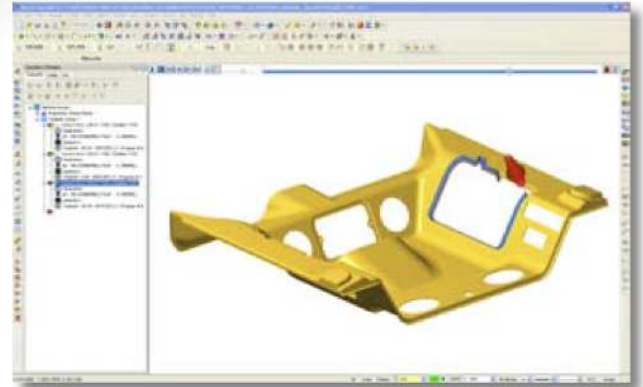
Take advantage of your robot's maximum workspace

Ideal for milling, trimming, welding, painting, sanding, polishing, de-burring, spray coating, dispensing, and more

"Program adjustments are easier and more accurate using Robotmaster rather than making them manually ..."
- Tripp Plastics

"Now the trajectory is controlled exactly the way I planned it, working on the computer screen ..."

- AV&R Vision & Robotics

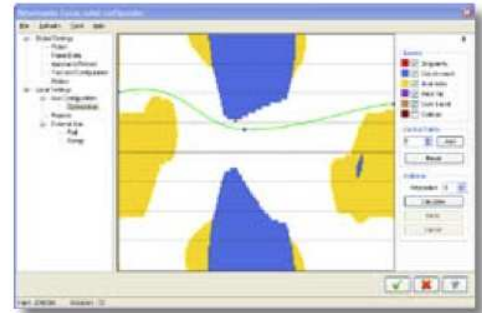


**the cost-efficiency
and flexibility of robots
+
the ease of programming
of Mastercam**

A proven solution for the automobile, aircraft, shipbuilding, composites, plastics and woodworking industries, and more . . .

Translate CNC toolpath data into optimized 6-axis robot programs

- Set robot configuration for optimal robot posture
- Manage motion between operations
- Analyse reach study automatically
- Control rotation around the tool precisely:
 - Avoid singularity, reach and joint limits
 - Optimize joint speeds to ensure smooth robot playback

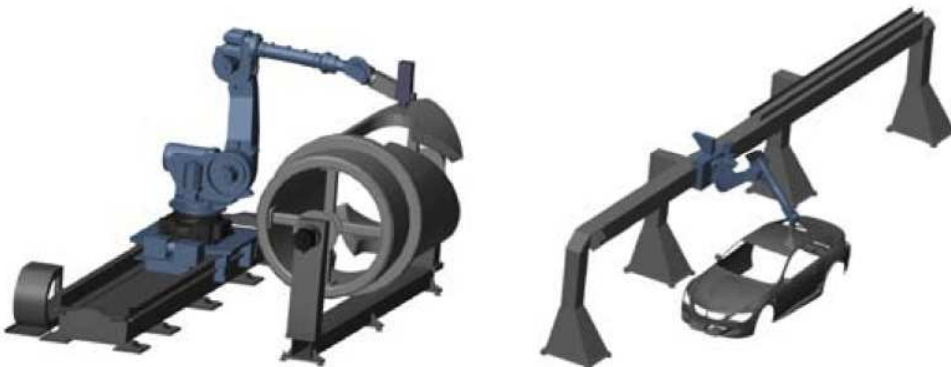


Generate robot-ready program files with Robotmaster's integrated post-processor

- Generate programs in robot native language
- Customize robot code output
- Manage long programs within limited robot memory by multi-file output

Extend range of travel for large work pieces

- Boat hulls, aircraft wings, wood working and others
- Easily program external axes (linear rails and/or rotary tables)



www.robotmaster.com

Copyright 2009 Jabez Technologies Inc. All rights reserved. RobotMaster is a registered trademark licensed exclusively to Jabez Technologies Inc. Mastercam is a registered trademark of CNC Software. Other trademarks and registered trademarks are property of the respective owners.

rotar

INGENIERIA